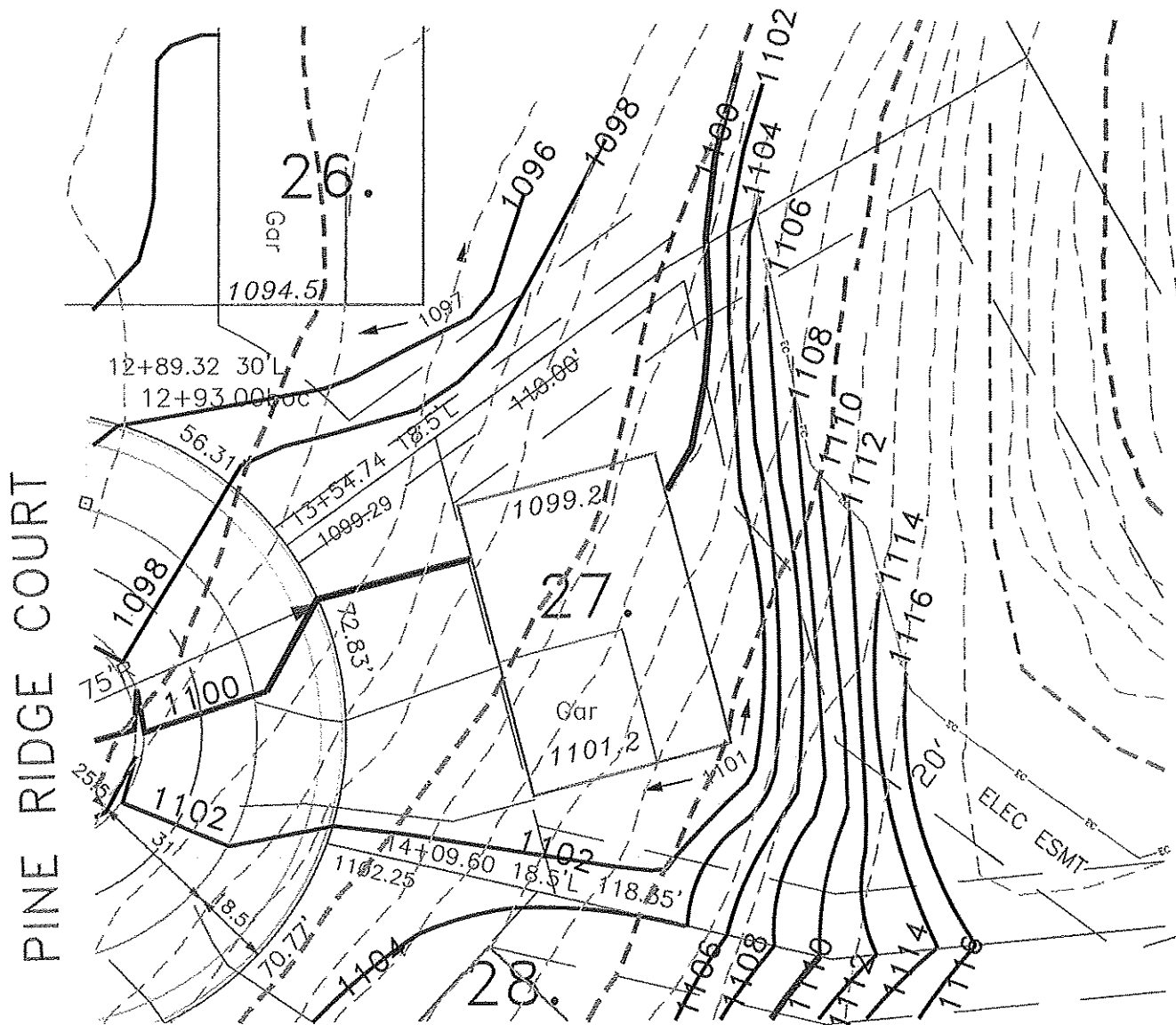


SCHWENDIMANN HILLS

NW 1/4 OF THE NE 1/4, SECTION 24, CITY OF HARTFORD.



PER APPROVED GRADING PLAN
W/ REVISION DATE - 05-25-05

— PROPOSED CONTOURS
- - - EXISTING CONTOURS

1099.5	YARD/GARAGE ELEVATION
1092.0	TOP OF WALL ELEVATION

 PROPOSED BUILDING PAD



ELDER ENGINEERING, LLC
3782 OVERLOOK DRIVE WEST
HUBERTUS WI 53033
262-628-1409



SCALE 1" = 40'